

Ashbury Stage 2

149-163 Milton St, Ashbury NSW 2193

STORMWATER MANAGEMENT

SHEET LIST

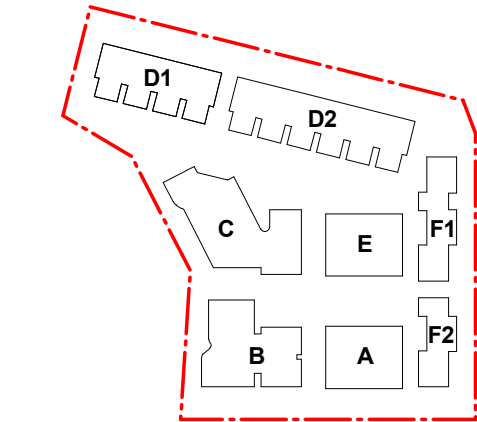
(20) DRAWING LIST - STORMWATER		
NUMBER	TITLE	REVISION
SW00	LEGEND AND COVER SHEET	C
SW01	BASEMENT - SHEET 1 OF 2	C
SW02	BASEMENT - SHEET 2 OF 2	C
SW03	GROUND FLOOR - SHEET 1 OF 2	C
SW04	GROUND FLOOR - SHEET 2 OF 2	C
SW05	DETAIL SHEET 1	C
SW06	DETAIL SHEET 2	C
SW07	SEDIMENT AND EROSION CONTROL	C
SW08	DETAIL SHEET 3	A



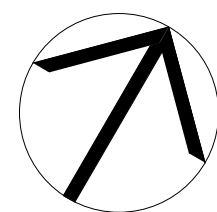
AMENDMENTS/REVISIONS			
Rev	Description	Initials	Date
A	DA ISSUE	BM	02.09.20
B	REVISED DA ISSUE	BM	30.08.21
C	REVISED DA ISSUE	BM	13.03.24

NOTES

KEY PLAN



NORTH



CLIENT



ARCHITECT



CONSULTANT



PROJECT

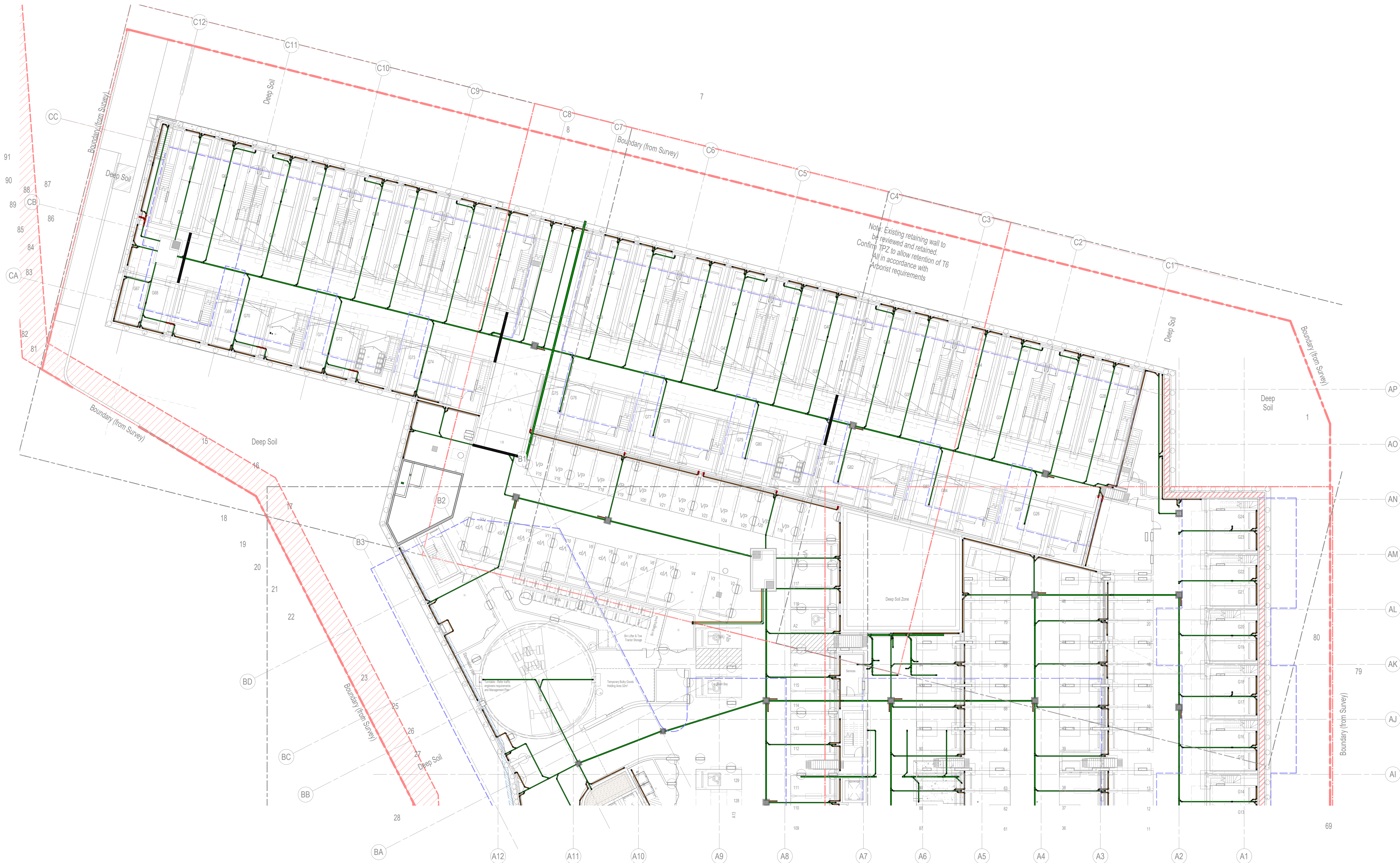
Ashbury Stage 2
149-163 Milton St, Ashbury NSW
2193

DRAWING TITLE

STORMWATER MANAGEMENT
LEGEND AND COVER SHEET

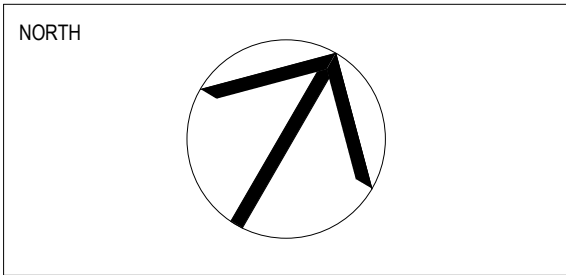
DA ISSUE

DRAWN	DESIGNED	CHECKED	SCALE @A1	DATE
RN	PS	BM	N.T.S	13.03.24
PROJECT No.		DRAWING No.		REVISION
EN-N23_262		SW00		C



AMENDMENTS/REVISIONS			
Rev	Description	Initials	Date
A	DA ISSUE	BM	02.09.20
B	REVISED DA ISSUE	BM	30.08.21
C	REVISED DA ISSUE	BM	13.03.24


NOTES	



CLIENT

CORONATION
PROPERTY

ARCHITECT

SJB Architects
Level 2, 490 Crown Street
Sydney NSW 2010
T 61 2 9380 9911
www.sjb.com.au

CONSULTANT

IGS
192-200 Euston Road, Alexandria NSW 2015
Phone +61 2 8488 4600
Web www.igs.com.au

PROJECT

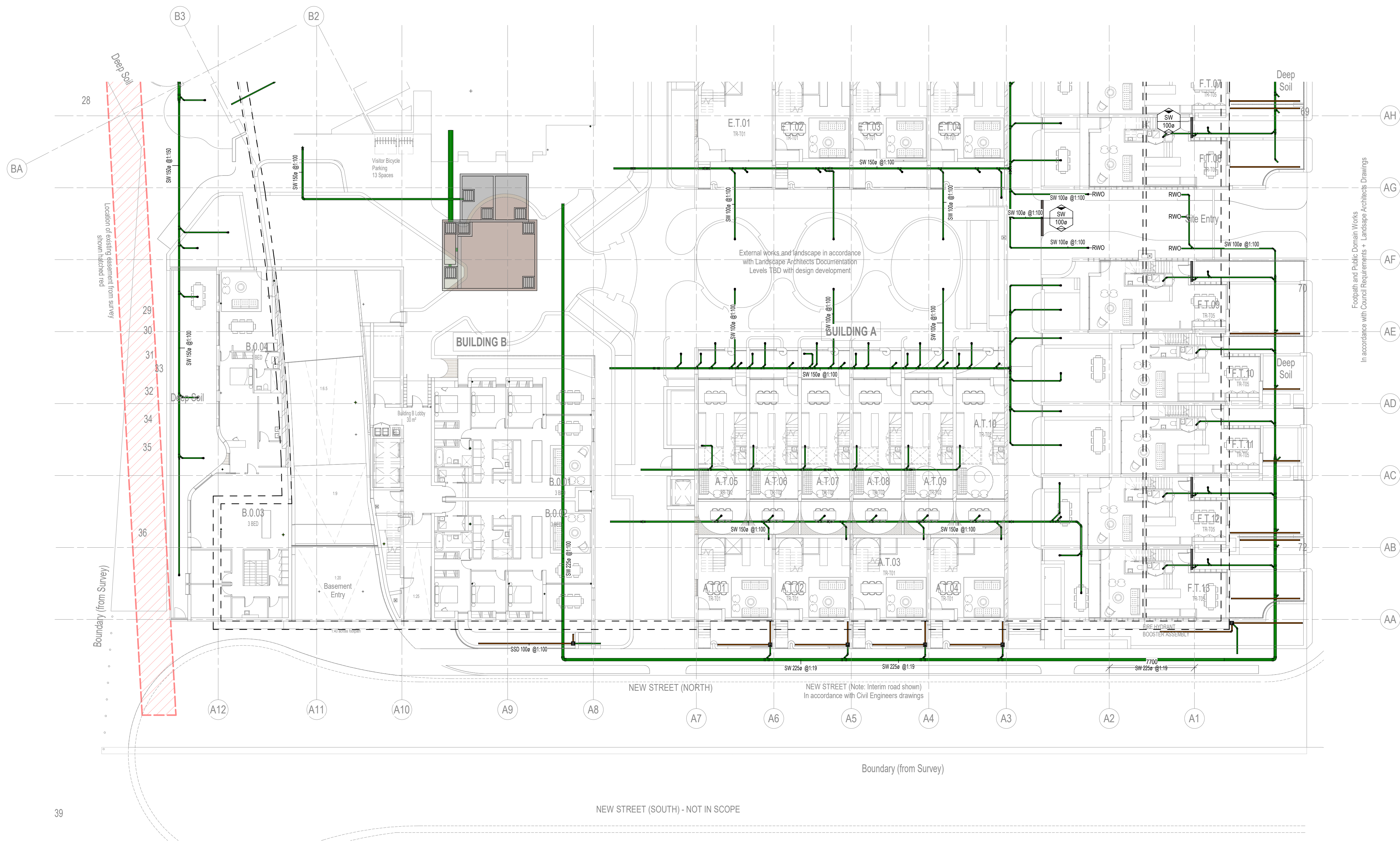
Ashbury Stage 2
149-163 Milton St, Ashbury NSW
2193

DRAWING TITLE

STORMWATER MANAGEMENT
BASEMENT - SHEET 1 OF 2

DA ISSUE

DRAWN RN	DESIGNED PS	CHECKED BM	SCALE @A1 1:200	DATE 13.03.24
PROJECT No. EN-N23_262			DRAWING No. SW01	REVISION C



NOTES

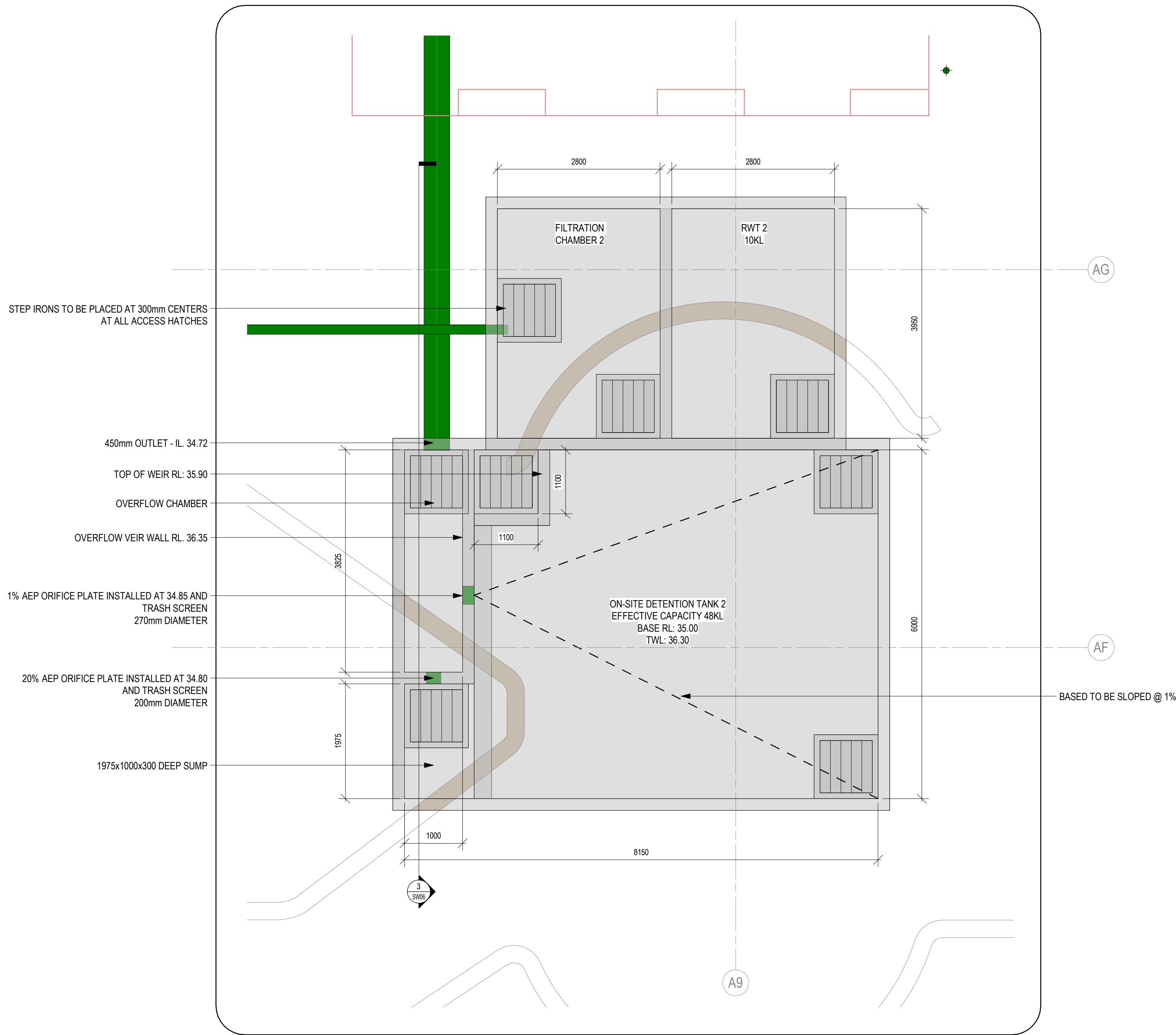


DRAWING TITLE

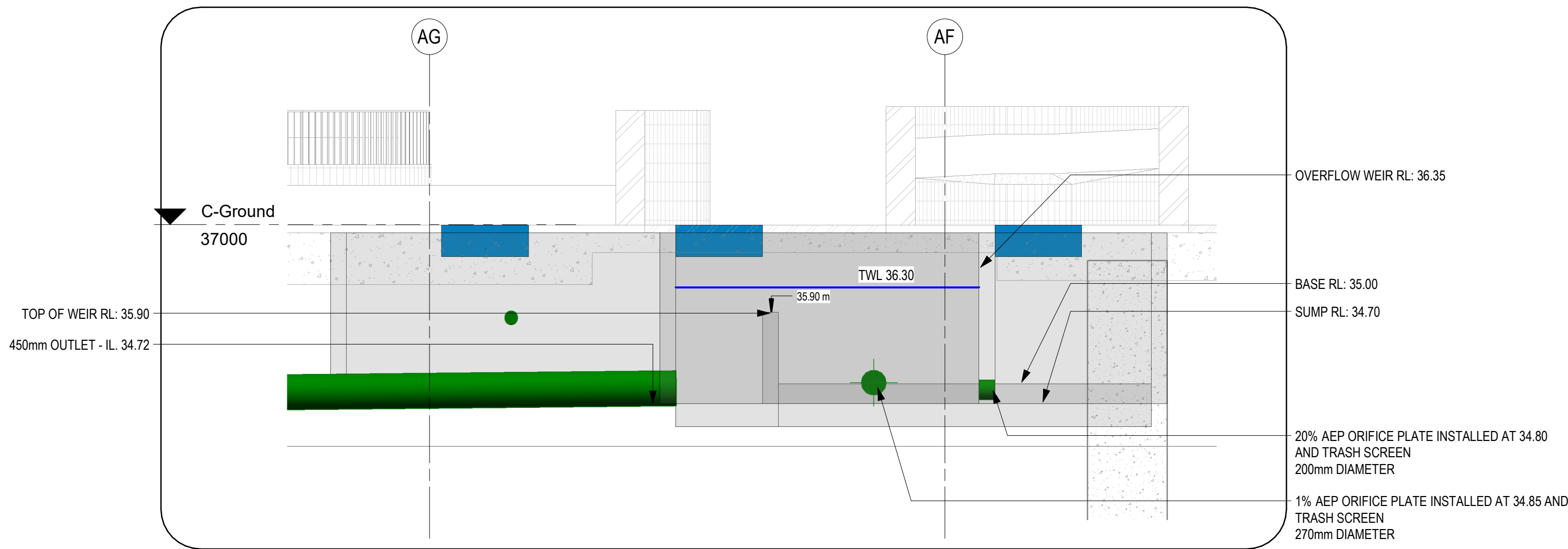
STORMWATER MANAGEMENT

GROUND FLOOR - SHEET 2 OF 2

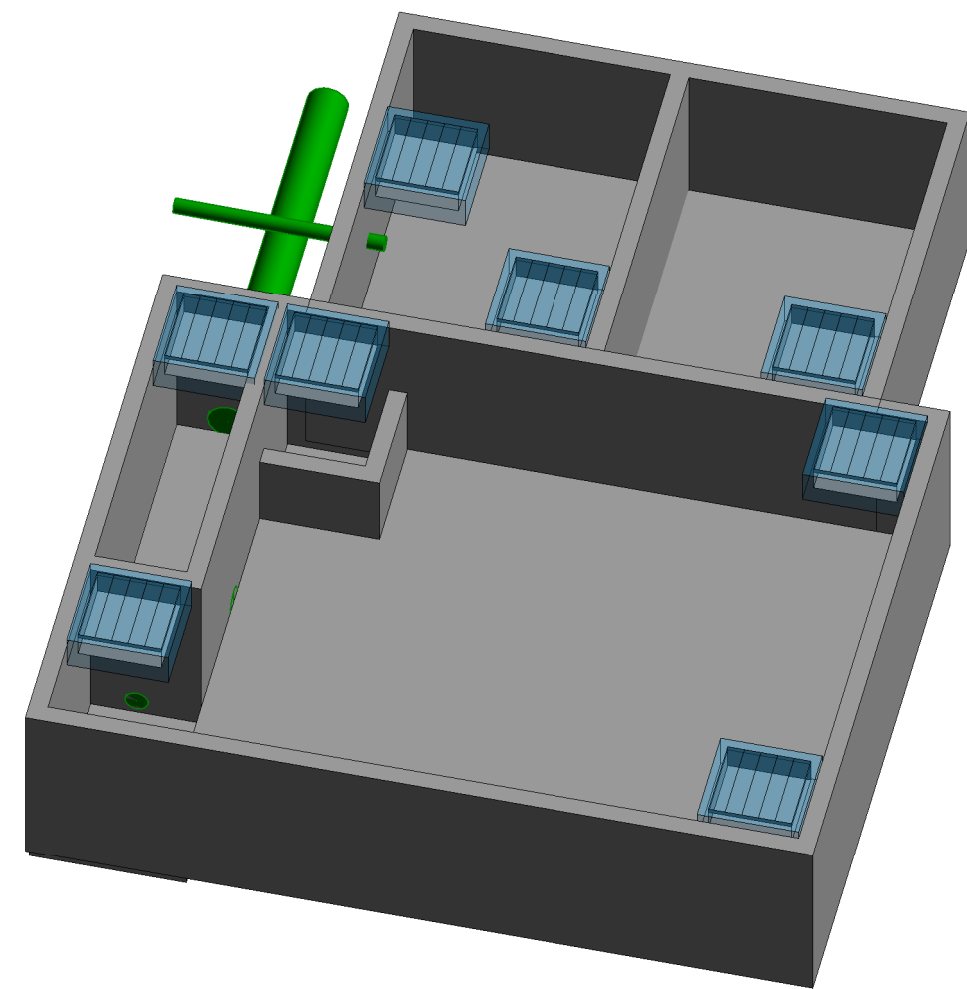
DA ISSUE				
DRAWN	DESIGNED	CHECKED	SCALE @A1	DATE
RN	PS	BM	1 : 200	13.03.24
PROJECT No.			DRAWING No.	REVISION
EN-N23_262			SW04	C



1 BASE PLAN - OSD-2 & RAINWATER TANK
1:50



3 OSD-2 - SECTION 2
1:50

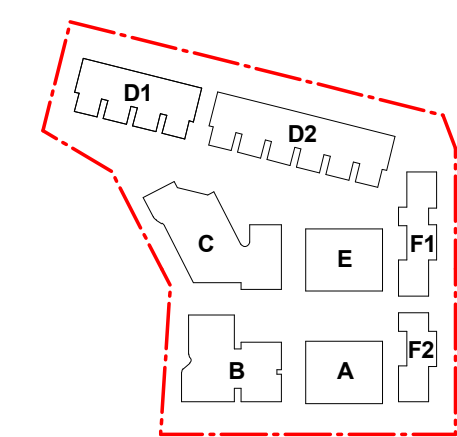


4 OSD-2 - 3D VIEW

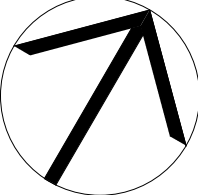
AMENDMENTS/REVISIONS			
Rev	Description	Initials	Date
A	DA ISSUE	BM	02.09.20
B	REVISED DA ISSUE	BM	30.08.21
C	REVISED DA ISSUE	BM	13.03.24

NOTES

KEY PLAN



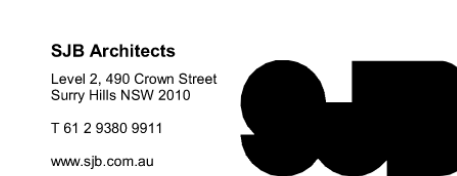
NORTH



CLIENT



ARCHITECT



CONSULTANT



PROJECT

Ashbury Stage 2
149-163 Milton St, Ashbury NSW 2193

DRAWING TITLE

STORMWATER MANAGEMENT
DETAIL SHEET 2

DA ISSUE			
DRAWN	DESIGNED	CHECKED	SCALE @A1
RN	PS	BM	1:50
PROJECT No.		DRAWING No.	REVISION
EN-N23_262		SW06	C

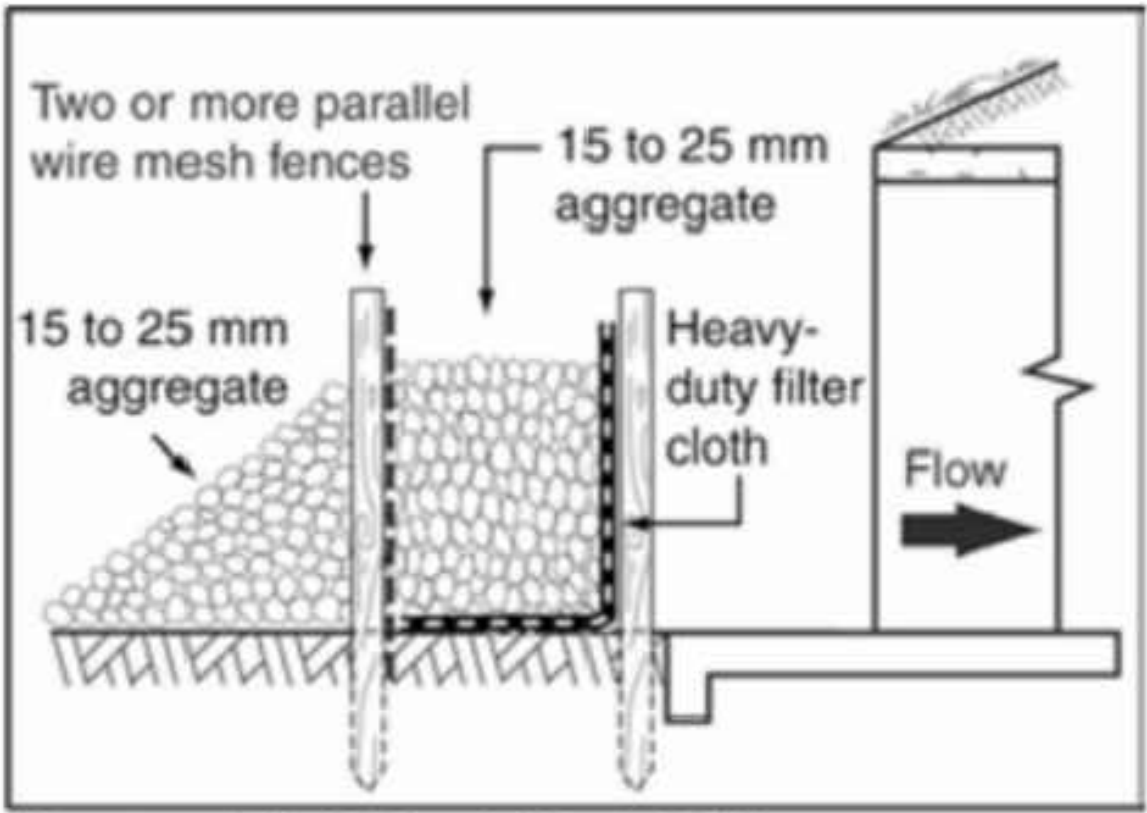
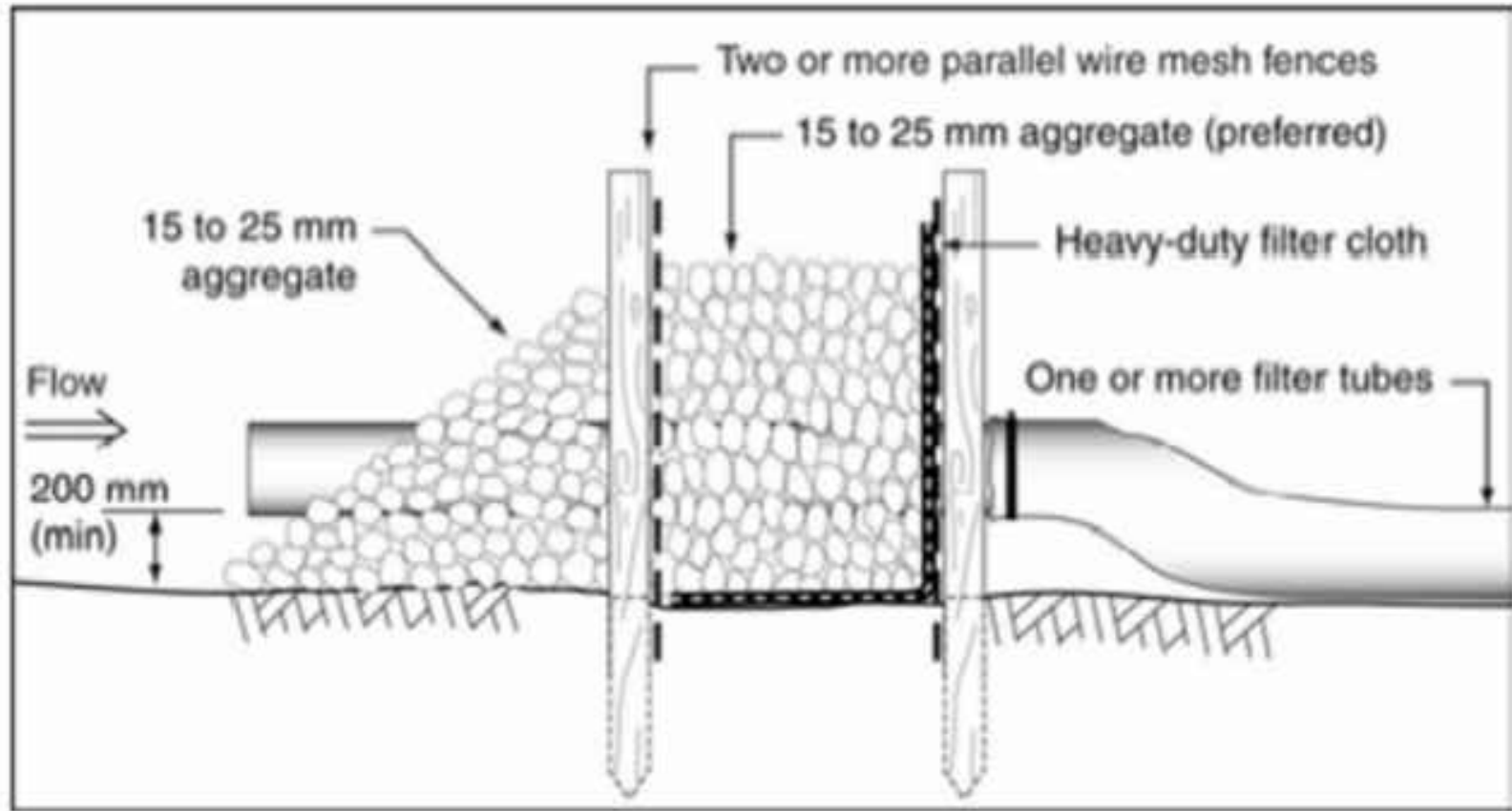
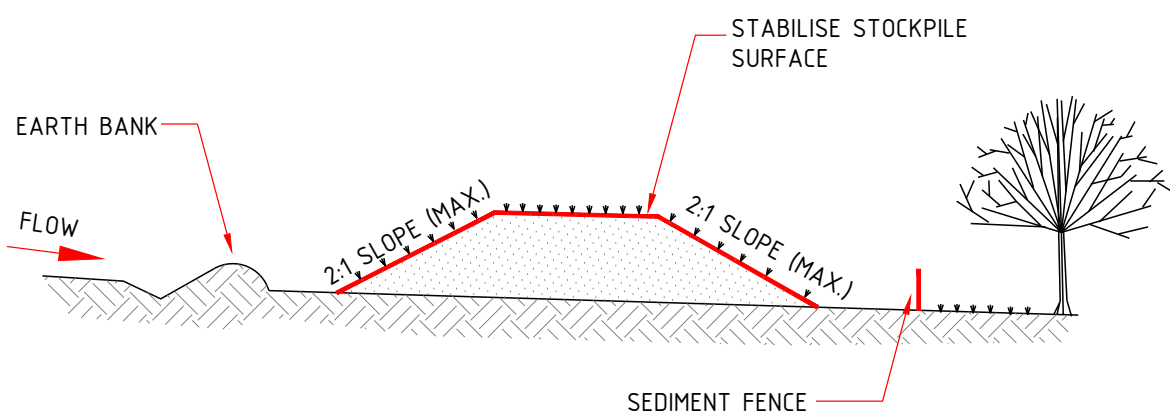


Diagram supplied by Catchments & Creeks Pty Ltd

Sediment weir



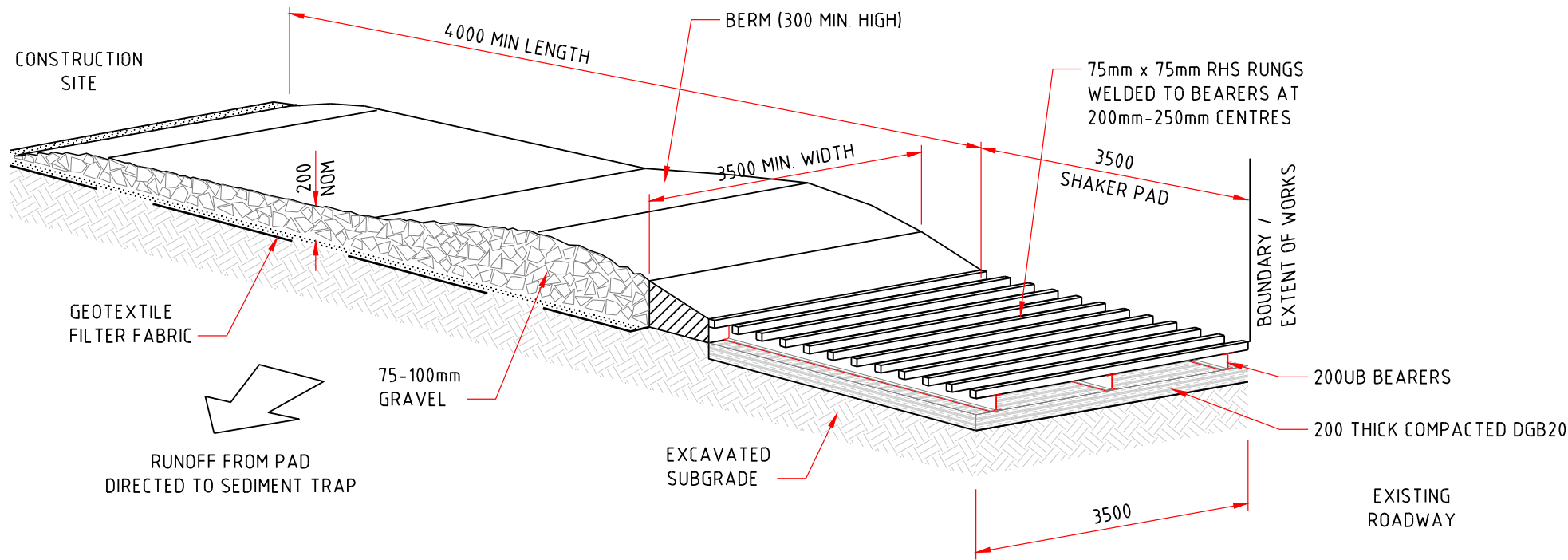
Sediment weir with filter tube incorporated into the weir



CONSTRUCTION NOTES -

1. LOCATE STOCKPILE AT LEAST 5 METRES FROM EXISTING VEGETATION, CONCENTRATED WATER FLOES, ROADS AND HAZARD AREAS.
 2. CONSTRUCT ON THE CONTOUR AS A LOW, FLAT, ELONGATED MOUND.
 3. WHERE THERE IS SUFFICIENT AREA, TOPSOIL STOCKPILES SHALL BE LESS THAN 2 METRES IN HEIGHT.
 4. REHABILITATE IN ACCORDANCE WITH SWMP/ESCP.
- CONSTRUCT EARTH BANK ON UPSLOPE SIDE TO DIVERT RUN OFF AROUND THE STOCKPILE AND A SEDIMENT FENCE 1 TO 2 METRES DOWNSLOPE OF STOCKPILE.

STOCKPILES
NTS

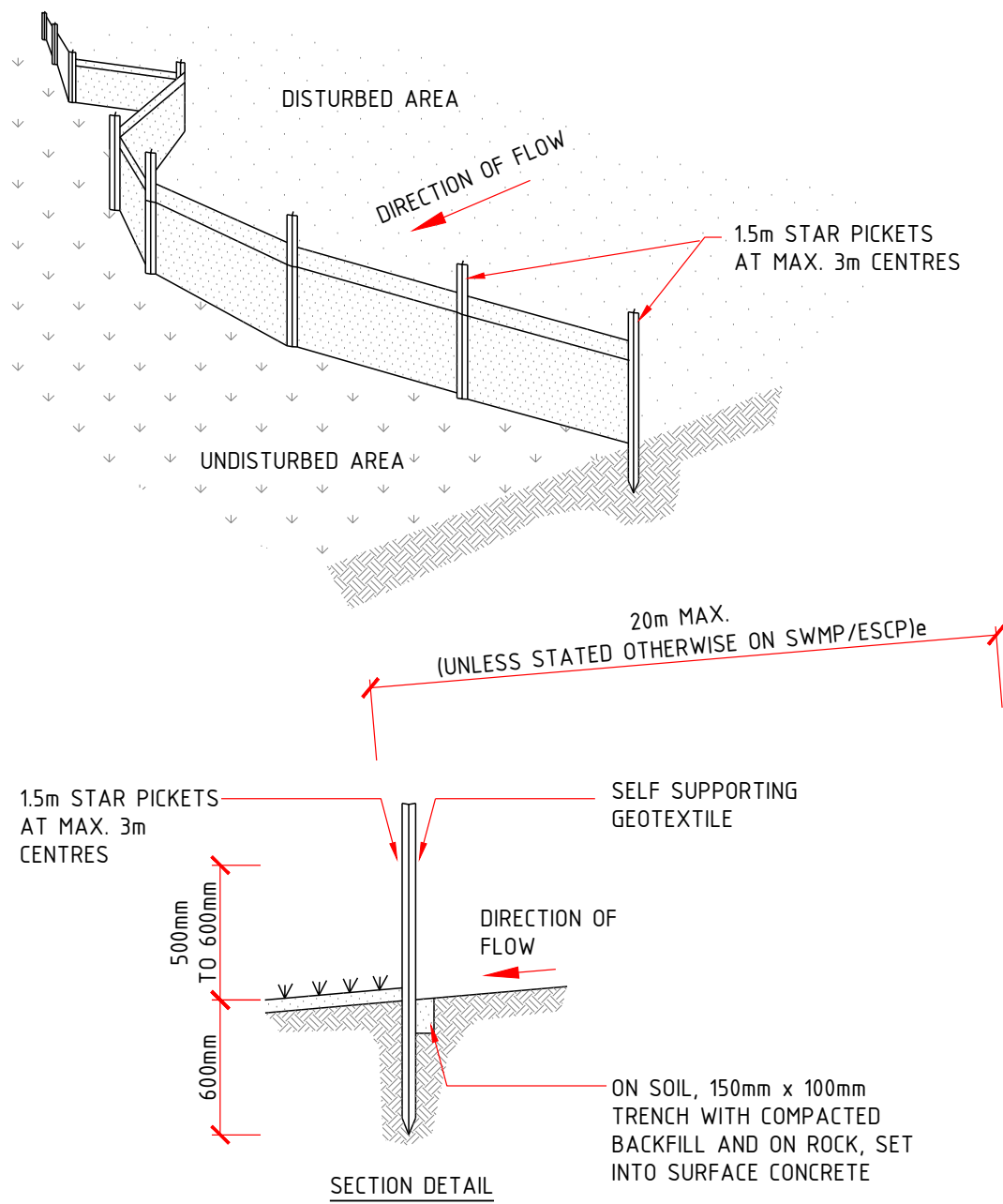


STABILISED SITE ACCESS
NOT TO SCALE

MAINTENANCE

- THE TEMPORARY ACCESS SHALL BE MAINTAINED IN A CONDITION THAT PREVENTS TRACKING OR FLOWING OF SEDIMENT ONTO PUBLIC RIGHTS OF WAY.
- THIS MAY REQUIRE PERIODIC TOP DRESSING WITH ADDITIONAL GRAVEL AS CONDITIONS DEMAND AND REPAIR AND/OR CLEANOUT OF ANY MEASURES USED TO TRAP SEDIMENT.
- ALL SEDIMENT SPILLED, DROPPED, WASHED OR TRACKED ONTO PUBLIC RIGHTS OF WAY MUST BE REMOVED IMMEDIATELY.
- INSTALL BARRIER ON EITHER SIDE OF SHAKER PAD TO ENSURE VEHICLES ARE GUIDED ON TO THE PAD.
- INVERT OF SHAKER PAD TO BE DRAINED VIA AGRICULTURAL PIPE WRAPPED IN GEOTEXTILE FABRIC.

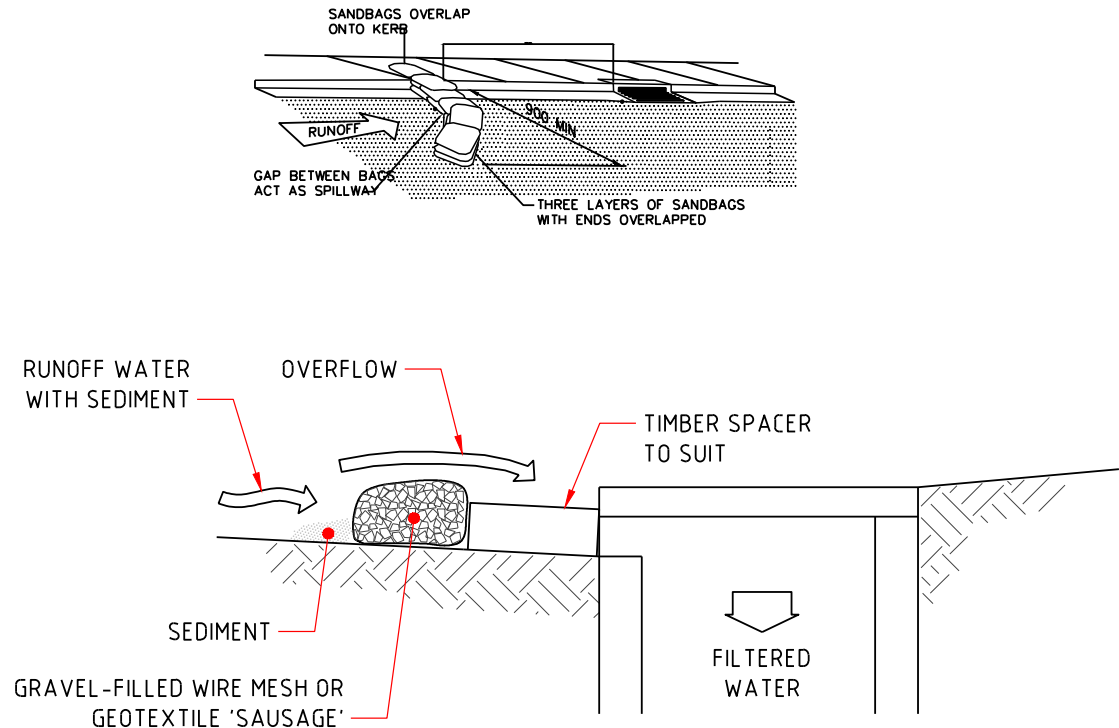
ST8.02



CONSTRUCTION NOTES -

1. CONSTRUCT SEDIMENT FENCE AS CLOSE AS POSSIBLE TO PARALLEL TO THE CONTOURS OF THE SITE.
2. DRIVE 15 METRE LONG STAR PICKETS INTO GROUND, 3 METRES APART.
3. DIG A 150mm DEEP TRENCH ALONG THE UPSLOPE LINE OF THE FENCE FOR THE BOTTOM OF THE FABRIC TO BE ENTRENCHED.
4. BACKFILL TRENCH OVER BASE OF FABRIC.
5. SELF SUPPORTING GEOTEXTILE TO UPSLOPE SIDE OF POSTS WITH WIRE TIES OR AS RECOMMENDED BY GEOTEXTILE MANUFACTURER
6. JOIN SECTIONS OF FABRIC AT A SUPPORT POST WITH 150mm OVERLAP.

SEDIMENT FENCE
NOT TO SCALE



MESH AND GRAVEL INLET FILTER
NOT TO SCALE

NOTES:

1. THIS PRACTICE ONLY TO BE USED WHERE SPECIFIED IN AN APPROVED SWMP/ESCP.
2. INSTALL FILTERS TO KERB INLETS ONLY AT SAG POINTS
3. FABRICATE A SLEEVE MADE FROM GEOTEXTILE OR WIRE MESH LONGER THAN THE LENGTH OF THE INLET PIT AND FILL IT WITH 25mm TO 50mm GRAVEL.
4. FORM AN ELLIPTICAL USS-SECTION ABOUT 150mm HIGH x 400mm WIDE
5. PLACE THE FILTER AT THE OPENING LEAVING AT LEAST A 100-mm SPACE BETWEEN IT AND THE KERB INLET. MAINTAIN THE OPENING WITH SPACE BLOCKS.
6. FORM A SEAL WITH THE KERB TO PREVENT SEDIMENT BYPASSING THE FILTER.
7. SANDBAGS FILLED WITH GRAVEL CAN SUBSTITUTE FOR THE MESH OR GEOTEXTILE PROVIDING THEY ARE PLACED SO THAT THEY FIRMLY ABUT EACH OTHER AND SEDIMENT-LADEN WATERS CANNOT PASS BETWEEN.

ST8.06

LEGEND

- □ — DENOTES SEDIMENT FENCE
- ○ — DENOTES SECURITY FENCE
- [] — DENOTES SAND BAG FILTER
- [] — DENOTES STABILISED SITE ENTRY

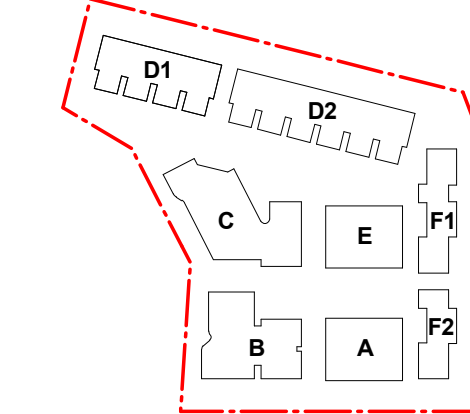
SEDIMENT & EROSION CONTROL SPECIFICATION

1. THE CONTRACTOR SHALL INSTIGATE ALL SEDIMENT AND EROSION CONTROL MEASURES IN ACCORDANCE WITH COUNCIL REQUIREMENTS AND THE 'BLUE BOOK' (MANAGING URBAN STORMWATER SOILS AND CONSTRUCTION, PRODUCED BY THE DEPARTMENT OF HOUSING). THESE MEASURES ARE TO BE REGULARLY INSPECTED AND MAINTAINED.
2. THE SEDIMENT & EROSION CONTROL PLAN PRESENTS CONCEPTS ONLY. THE CONTRACTOR SHALL AT ALL TIMES BE RESPONSIBLE FOR THE ESTABLISHMENT & MANAGEMENT OF A DETAILED SCHEME MEETING COUNCIL'S DESIGN, AND ALL OTHER REGULATORY AUTHORITY REQUIREMENTS.
3. WHERE PRACTICAL, THE SOIL EROSION HAZARD ON THE SITE SHALL BE KEPT AS LOW AS POSSIBLE. TO THIS END, WORKS SHOULD BE UNDERTAKEN IN THE FOLLOWING SEQUENCE:
4. INSTALL ALL TEMPORARY SEDIMENT FENCES AND BARRIER FENCES. WHERE FENCES ARE ADJACENT TO EACH OTHER THE SEDIMENT FENCE CAN BE INCORPORATED INTO THE BARRIER FENCE.
5. CONSTRUCT TEMPORARY STABILISED SITE ACCESS, INCLUDING SHAKE DOWN AND WASH PAD.
6. INSTALL SEDIMENT CONTROL MEASURES AS OUTLINED ON THESE SEDIMENT AND CONTROL PLANS (ONCE APPROVED)
7. THE CONTRACTOR SHALL UNDERTAKE SITE DEVELOPMENT WORKS SO THAT LAND DISTURBANCE IS CONFINED TO AREAS OF MINIMUM WORKABLE SIZE.
8. AT ALL TIMES AND IN PARTICULAR DURING WINDY AND DRY WEATHER, LARGE, UNPROTECTED AREAS WILL BE KEPT MOIST (NOT WET) BY SPRINKLING WITH WATER TO KEEP DUST UNDER CONTROL.
9. ANY SAND USED IN THE CONCRETE CURING PROCESS (SPREAD OVER THE SURFACE) SHALL BE REMOVED AS SOON AS POSSIBLE AND WITHIN 10 WORKING DAYS FROM PLACEMENT.
10. WATER SHALL BE PREVENTED FROM ENTERING THE PERMANENT DRAINAGE SYSTEM UNLESS THE CATCHMENT AREA HAS BEEN STABILISED AND/OR ANY LIKELY SEDIMENT HAS BEEN FILTERED OUT.
11. TEMPORARY SOIL AND WATER MANAGEMENT STRUCTURES SHALL BE REMOVED ONLY AFTER THE LANDS THEY ARE PROTECTING ARE STABILISED/REHABILITATED.
12. THE CONTRACTOR SHALL ALLOW FOR THE ESTABLISHMENT OF ANY OTHER EROSION PROTECTION MEASURES (IF APPLICABLE).
13. EROSION AND SEDIMENT CONTROL MEASURES SHALL BE INSPECTED TO ENSURE THAT THEY OPERATE EFFECTIVELY. REPAIRS AND/OR MAINTENANCE SHALL BE UNDERTAKEN REGULARLY AND AS REQUIRED, PARTICULARLY FOLLOWING STORM EVENTS.
14. ACCEPTABLE RECEPTORS SHALL BE USED FOR CONCRETE AND MORTAR SLURRIES, PAINTS, ACID WASHINGS, LIGHT-WEIGHT WASTE MATERIALS AND LITTER. WASTE FROM THESE RECEPTORS SHALL BE DISPOSED OF IN ACCORDANCE WITH REGULATORY AUTHORITY REQUIREMENTS. PAY ALL FEES AND PROVIDE EVIDENCE OF SAFE DISPOSAL.

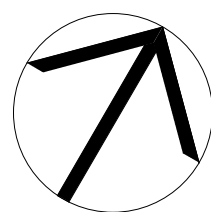
AMENDMENTS/REVISIONS			
Rev	Description	Initials	Date
A	DA ISSUE	BM	13.03.24

NOTES

KEY PLAN



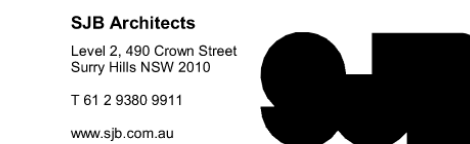
NORTH



CLIENT



ARCHITECT



CONSULTANT



PROJECT

Ashbury Stage 2
149-163 Milton St, Ashbury NSW 2193

DRAWING TITLE

STORMWATER MANAGEMENT
SEDIMENT AND EROSION
CONTROL
DETAIL SHEET 3

DA ISSUE

DRAWN	DESIGNED	CHECKED	SCALE @A1	DATE
RN	PS	BM		13.03.24
PROJECT No: EN-N23_262		DRAWING No: SW08		REVISION A